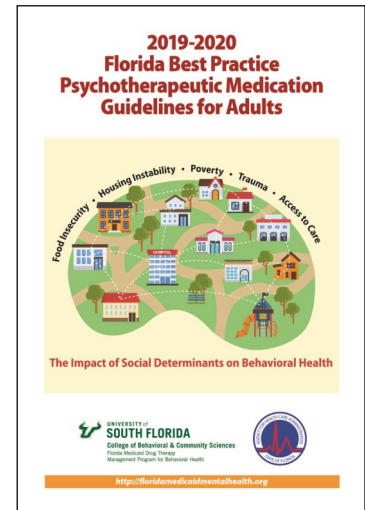


# The Prescriber Connection

Winter 2019/Spring 2020

## NOW AVAILABLE: 2019–2020 FLORIDA BEST PRACTICE PSYCHOTHERAPEUTIC MEDICATION GUIDELINES FOR ADULTS

- ◇ The Adult Florida Expert Panel met in November 2019 to update the 2017-2018 Florida Best Practice Psychotherapeutic Medication Guidelines for Adults. Panel members included local and national experts, behavioral health and primary care clinicians, pharmacists, and Florida Medicaid Managed Medical Assistance (MMA) health plan medical directors.
- ◇ The 2019-2020 Florida Best Practice Psychotherapeutic Medication Guidelines for Adults provide treatment recommendations for a range of serious behavioral health conditions, including bipolar disorder, major depressive disorder, and schizophrenia based on the latest evidence and clinical consensus.
- ◇ New to the 2019-2020 Florida Best Practice Psychotherapeutic Medication Guidelines for adults is a focus on the role of social determinants on behavioral and physical health outcomes.
- ◇ Pharmacological updates include the use of intranasal esketamine for treatment-resistant major depressive disorder, a treatment algorithm for the management of breakthrough psychosis with long-acting injectable antipsychotic medications (LAIs), and a summary of vesicular monoamine transporter type 2 (VMAT2) inhibitors recently approved for treatment of tardive dyskinesia.
- ◇ Other available Program guidelines:
  - Florida Best Practice Psychotherapeutic Medication Guidelines for Children and Adolescents
  - Autism Spectrum Disorder and Intellectual Developmental Disorder
  - Florida Best Practice Recommendations for Women of Reproductive Age with Serious Mental Illness and Comorbid Substance Use Disorders
  - Monitoring Physical Health and Psychotherapeutic Medications in Adults and Children: An Integrated Approach.



Guidelines can be downloaded electronically from the Program website at

<http://floridamedicaidmentalhealth.org>.

Please contact Sabrina Singh at [sabrinasingh@usf.edu](mailto:sabrinasingh@usf.edu) if you would like to pre-order hardcopies of the guidelines.



# FLORIDA MEDICAID DRUG THERAPY MANAGEMENT PROGRAM FOR BEHAVIORAL HEALTH

## SELECTED PROGRAM HIGHLIGHTS

### Florida Telepsychiatry Collaborative for Kids

- ◇ Starting July 1, 2019, the Program has expanded telepsychiatry services to additional pediatric practice sites in Florida, including locations in Tampa and Largo.
- ◇ The goal of the telepsychiatry project is to minimize barriers to seeking behavioral health services through use of technology to facilitate collaborative care.
- ◇ Specific aims of the telepsychiatry collaborative are to: 1) increase pediatricians' knowledge and ability to provide quality behavioral health services in the primary care setting and 2) facilitate greater understanding of the collaborative care model.
- ◇ The Program has collaborated with National Center for Performance Health (NCPH), All Children's Hospital, and USF Psychiatry to schedule appointments and offer psychiatric and therapy services.
  - ◇ The National Center for Performance Health (NCPH) continues to coordinate telepsychiatry consults.
  - ◇ Child and adolescent psychiatrists at All Children's Hospital and USF Psychiatry provide ongoing, concise psychiatric consultations.
  - ◇ Therapists at All Children's Hospital and USF psychiatry have offered parenting group skills training sessions to allow parents and caregivers to communicate effectively with their children and manage challenging behaviors.

For information on how to connect with the telepsychiatry network call Sabrina Singh at 813-974-9879 or e-mail [sabrinasingh@usf.edu](mailto:sabrinasingh@usf.edu).

### Registry: Addressing the Emerging Relevance of Attention-Deficit Hyperactivity Disorder (ADHD) and Comorbid Serious Emotional Disturbance (SED) Conditions

- ◇ The Registry is an evolving database that tracks and evaluates the experience of care for Medicaid-enrolled children and adolescents with behavioral health conditions.
- ◇ An emerging issue is the focus on Attention-Deficit Hyperactivity Disorders (ADHD) and comorbid SED conditions.
- ◇ Among children enrolled in Florida Medicaid Managed Medical Assistance (MMA) plans, approximately 12.6% of children with an ADHD diagnosis were prescribed an antipsychotic medication (AP).
- ◇ The most common comorbid SED conditions in children with ADHD prescribed AP medications were disruptive behavior disorders (conduct disorder and oppositional defiant disorder), autism, and bipolar disorder.

### Florida Medicaid Drug Therapy Management Program for Behavioral Health Receives Recognition from Florida Chapter of the American Academy of Pediatrics for Dedication to Florida's Children and Families

- ◇ During the Florida Chapter of the American Academy of Pediatrics (FCCAP) Annual Meeting the Florida Medicaid Drug Therapy Management Program for Behavioral Health was recognized for the Program's continued support and dedication to Florida's Children and Families.

# Florida Pediatric Psychiatry Hotline

## 1-866-487-9507

### No registration required.

The Florida Pediatric Psychiatry Hotline provides timely telephonic psychiatric and clinical guidance to primary care clinicians treating children with behavioral health conditions. The hotline enables primary care clinicians to get assistance for any child under their care and is highly rated by those using the service.

The Florida Pediatric Psychiatry Hotline is operated by the University of South Florida Division of Child and Adolescent Psychiatry and the Rothman Center for Neuropsychiatry in St. Petersburg, Florida. A team of board certified child psychiatrists from the University of South Florida oversee the hotline and provide many of the consultations.

### The goals of the Pediatric Psychiatry Hotline are to:

- Provide consultation about psychotherapeutic medications for children with behavioral health conditions.
- Facilitate a referral to a child psychiatrist or psychiatric advanced practice registered nurse (APRN) when possible.
- Promote a collaborative relationship between primary care clinicians and child psychiatrists.

### About the service:

- The hotline is free and related to consultation about medication management.
- Calls will be answered on non-holiday weekdays between 8:30 am and 4:30 pm.
- Most calls will be scheduled with a child psychiatrist within 1 to 4 hours.
- Telephone consultations are limited to 20 minutes per call.
- Only information relevant to medication management will be discussed. No patient names or other unique identifying information needs to be provided.

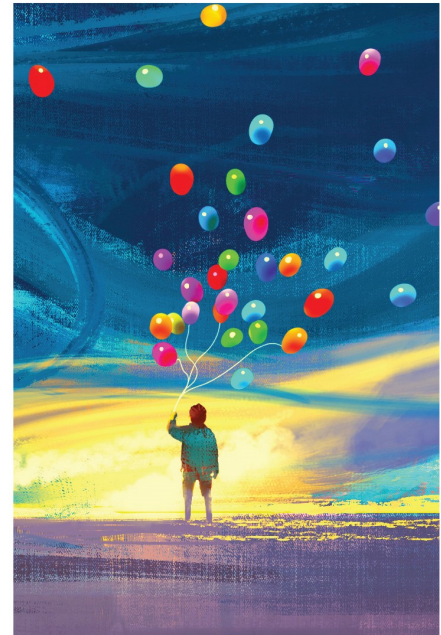


**UNIVERSITY of  
SOUTH FLORIDA**  
College of Behavioral & Community Sciences  
Florida Medicaid Drug Therapy  
Management Program for Behavioral Health



**<http://floridamedicaidmentalhealth.org>**

The Florida Pediatric Psychiatry Hotline is funded by the Florida Medicaid Drug Therapy Management Program for Behavioral Health through a contract with the Florida Agency for Healthcare Administration.



# FLORIDA MEDICAID DRUG THERAPY MANAGEMENT PROGRAM FOR BEHAVIORAL HEALTH

## SELECTED PROGRAM HIGHLIGHTS *(CONTINUED)*

### USF/Aunt Bertha Web-Based Resource Guide

*Available at:* <https://floridamedicaidmentalhealth.auntbertha.com>

- ◇ The USF Florida Medicaid Drug Therapy Management Program for Behavioral Health collaborates with Aunt Bertha on an ongoing basis to improve access to free or reduced-cost behavioral and physical health services and community resources such as food banks, transportation, and housing available to communities throughout Florida.
- ◇ The Program is also actively collaborating with community partners to increase awareness of resources that address social determinants of health such as homelessness.
- ◇ Community resources include health, housing, food banks, transportation, and other services. These resources are updated quarterly.
- ◇ The site first became available on April 15, 2019. Between April 15 and May 31, 2019, there have already been over 1,000 searches conducted on the site.
- ◇ Clinicians can visit <https://floridamedicaidmentalhealth.auntbertha.com> and search by zip code, category, or keyword for local Florida resources.
- ◇ For more information, visit the Program website at <http://floridamedicaidmentalhealth.org>.

### Biannual Report: Tracking the Experience of Care for Children and Adults with Severe Behavioral Health Conditions

- ◇ The Program produces biannual reports that monitor the experience of care of children and adults with severe mental illness (SMI) and serious emotional disturbances (SED) such as major depressive disorder, bipolar disorder, schizophrenia, conduct disorder, oppositional defiant disorder, and attention-deficit/hyperactivity disorder.
- ◇ Low medication adherence continues to be an ongoing concern among adults and children with SMI and SED. Overall, 61.5% of child recipients and 57.5% of adult recipients prescribed psychotherapeutic medications were noncompliant, as defined by a percent of days covered (PDC) of less than 80%.
- ◇ Physical health conditions such as headache and low back pain among adults and fever and asthma in children continue to be among the most common conditions treated in the emergency setting.
- ◇ Baker Act rates were significantly higher among individuals with multiple SMI or SED conditions. The overall Baker Act rate among recipients with multiple SED diagnoses was 4.6 times higher than the Baker Act rate among recipients with one SED diagnosis.

### Program Webinars

The Florida Medicaid Drug Therapy Management Program for Behavioral Health offers free webinars to address a range of behavioral health topics and allows clinicians to stay updated on the latest advances in behavioral health care. Webinar topics include recommendations to manage behavioral health conditions in adults and children, the role of care integration, and innovative methods to address challenges affecting individuals with serious mental illness (SMI) and serious emotional disturbances (SED) with the goal of improving health outcomes.

Visit the Program's website to view recent webinars:

- ◇ **Artificial Intelligence for Social Determinants of Health** - *Steve Miff, PhD*
- ◇ **Enhanced Collaboration Across Specialties to Improve Outcomes in Pediatrics** - *Daniel Castellanos, MD*



# USF/Aunt Bertha Comprehensive Web-Based Florida Resource Guide

**<https://floridamedicaidmentalhealth.auntbertha.com/>**

## About

- The USF Florida Medicaid Drug Therapy Management Program for Behavioral Health has collaborated with Aunt Bertha to create a free, web-based search tool for behavioral and physical health services and community resources.
- Resources include health, housing, food banks, transportation, and other services.

## How to Search for Local Resources

- After entering a local zip code, providers can search by category or keyword.

Search for behavioral and physical health services and community resources including housing, food banks, and transportation.

Zip

Enter zip code of interest here and click "search"

- Click the specific category of interest (e.g., food, housing, transit, health) to view available resources, or enter a keyword to narrow the search.

Zip or keyword or program

Select Language ▼

Type the keyword or name of the program here, or search by a different zip code.

FOOD HOUSING GOODS TRANSIT HEALTH MONEY CARE EDUCATION

- Click on the program of interest to view information such as services provided, location, hours, and contact information about that program.



UNIVERSITY of  
**SOUTH FLORIDA**  
College of Behavioral & Community Sciences  
Florida Medicaid Drug Therapy  
Management Program for Behavioral Health



For any questions, email [sabrinasingh@usf.edu](mailto:sabrinasingh@usf.edu).

Visit [floridamedicaidmentalhealth.org](https://floridamedicaidmentalhealth.org) for more information.

## SELECTED BEHAVIORAL HEALTH CLINICAL UPDATES

### NEW MEDICATION LUMATEPERONE (CAPLYTA) FDA-APPROVED FOR SCHIZOPHRENIA

- ◇ In December 2019, the Food and Drug Administration (FDA) approved lumateperone for the treatment of schizophrenia in adults.
- ◇ Although the exact mechanism of the drug is not well understood, the medication is thought to work as an antagonist of central D2 post-synaptic receptors and serotonin 5-HT<sub>2A</sub> receptors.
- ◇ Lumateperone is dosed as an oral once daily medication at 42 milligrams per day.
- ◇ Two placebo-controlled trials showed superior efficacy of lumateperone compared to placebo, among adults with schizophrenia, with statistically significant separation from placebo on the Positive and Negative Syndrome Scale (PANSS) total score.
- ◇ The most common side effects reported were sedation and dry mouth.
- ◇ Lumateperone carries a boxed warning for increased risk of death in patients with dementia-related psychosis.

For more information, visit

<https://www.accessdata.fda.gov/scripts/cder/daf/index.cfm?event=overview.process&ApplNo=209500>.

---

### TREATMENT HIGHLIGHT: FOOD AND DRUG ADMINISTRATION (FDA) APPROVED MEDICATIONS FOR TARDIVE DYSKINESIA

- ◇ Tardive dyskinesia is a movement disorder characterized by involuntary, repetitive, jerking or writhing movements of the face, tongue, lips, torso, or extremities most commonly associated with antipsychotic medication treatment.
- ◇ In 2017, valbenazine (Ingrezza<sup>TM</sup>) and deutetrabenazine (Austedo<sup>TM</sup>) became the first FDA-approved agents to treat tardive dyskinesia.
- ◇ Valbenazine and deutetrabenazine are vesicular monoamine transporter-2 (VMAT-2) inhibitors, which block the storage and release of dopamine. Less dopamine storage and release theoretically reduces overstimulation of dopamine receptors in the motor striatum, leading to reduction in abnormal involuntary movements associated with tardive dyskinesia.
- ◇ The most common side effects associated with these medications were fatigue and somnolence. Other reported side effects included dry mouth, constipation, blurred vision, urinary retention, headache, akathisia, and gait disturbances.
- ◇ Deutetrabenazine has a boxed warning for increased risk of depression and suicidality in patients with Huntington disease.

For more information on label changes for opioid medications, visit

[https://www.accessdata.fda.gov/drugsatfda\\_docs/nda/2017/209885Orig1s000TOC.cfm](https://www.accessdata.fda.gov/drugsatfda_docs/nda/2017/209885Orig1s000TOC.cfm) and [https://www.accessdata.fda.gov/drugsatfda\\_docs/nda/2017/209241Orig1s000TOC.cfm](https://www.accessdata.fda.gov/drugsatfda_docs/nda/2017/209241Orig1s000TOC.cfm).

Newsletter compiled by Vanita Sahasranaman, MD ([vanitas@usf.edu](mailto:vanitas@usf.edu))  
For inquiries, please contact Sabrina Singh, MPH at [sabrinasingh@usf.edu](mailto:sabrinasingh@usf.edu)

# Florida Medicaid Drug Therapy Management Program for Behavioral Health

Working with Medicaid health plans and providers to:

- Improve behavioral health prescribing practices
- Improve patient adherence to medication
- Reduce clinical risks and medication side effects
- Improve behavioral and physical health outcomes

The following treatment guidelines are available on our website at [floridamedicaidmentalhealth.org](http://floridamedicaidmentalhealth.org).

- Monitoring Physical Health and Side-Effects of Psychotherapeutic Medications in Adults and Children: An Integrated Approach
- Best Practice Psychotherapeutic Medication Guidelines for Children and Adolescents
- Autism Spectrum Disorder & Intellectual Developmental Disorder: Best Practice Psychotherapeutic Medication Recommendations for Target Symptoms in Children and Adolescents
- Best Practice Recommendations for Women of Reproductive Age with Severe Mental Illness and Substance Use Disorders
- Best Practice Psychotherapeutic Medication Guidelines for Adults

The **Florida Pediatric Psychiatry Hotline** is a free service that provides consultation about medication management for behavioral health.

**Florida Pediatric Psychiatry Hotline**

**1-866-487-9507**



UNIVERSITY of  
**SOUTH FLORIDA**

**College of Behavioral & Community Sciences**

Florida Medicaid Drug Therapy  
Management Program for Behavioral Health

For more information, visit us at  
[floridamedicaidmentalhealth.org](http://floridamedicaidmentalhealth.org)

