

# The Prescriber Connection

Summer 2020

## THANK YOU FLORIDA AGENCY FOR HEALTHCARE ADMINISTRATION (AHCA)

We wish to express our deepest gratitude to the Florida Agency for Healthcare Administration (AHCA) for 14 years of uninterrupted funding which comes to an end on June 30, 2020. Our Program, the Florida Medicaid Drug Therapy Management Program for Behavioral Health, was created by AHCA in response to concern over the prescribing of antipsychotic medications to children. The overarching aim of the Program is to optimize the evidence-based use of psychotherapeutic medications and support primary care clinicians treating patients with chronic psychiatric diagnoses.

AHCA's vision and commitment to improving psychotherapeutic prescribing made it possible to develop and disseminate the Florida Best Practice Psychotherapeutic Medication Guidelines for adults with serious mental illness (SMI) and children with severe emotional disturbances (SED).

With the collaboration of Florida, national and international experts, and many stakeholders concerned about the care of vulnerable populations with behavioral health conditions, the program guidelines were updated biannually and will continue to be updated to keep up with the most recent scientific evidence regarding the pharmacological treatment of serious behavioral health conditions.

Together we have accomplished many projects which contributed to improving the quality of psychotherapeutic medication prescribing to adults and children.

We deeply appreciate and thank the Florida Agency for Healthcare Administration (AHCA) and the many professionals with whom we have had the privilege of working with over the years. When feasible, we will continue to collaborate with the Florida Agency for Healthcare Administration (AHCA) to ensure that beneficiaries with behavioral health conditions have access to timely and evidence-based behavioral healthcare.

## CHANGING OUR NAME BUT NOT OUR MISSION

As of July 1, 2020 our Program will undergo several changes as we explore and form new partnerships. Our new name, the Florida Behavioral Health Management Center, reflects these new partnerships. We plan to continue our efforts to update and disseminate our psychotherapeutic medications guidelines to reach a national audience and provide continuing medical education. An added component will focus on special populations and treatment of comorbid psychiatric conditions. Visit our website <http://floridabhcenter.org> for the most current information.

# FLORIDA MEDICAID DRUG THERAPY MANAGEMENT PROGRAM FOR BEHAVIORAL HEALTH

## NEW GUIDELINES AVAILABLE:

### 2020 MONITORING PHYSICAL HEALTH AND SIDE-EFFECTS OF PSYCHOTHERAPEUTIC MEDICATIONS IN ADULTS AND CHILDREN: AN INTEGRATED APPROACH

- ◇ Many factors contribute to the poor physical health of individuals with serious mental illness (SMI) and severe emotional disturbances (SED), including disparities in health care access and utilization, as well as provision of health services.
- ◇ This publication provides information regarding common physical health conditions that occur with greater frequency among individuals with SMI and SED, documents screening/monitoring recommendations for these physical health conditions, and explores potential barriers that may adversely affect healthcare delivery, as well as treatment adherence in this population.
- ◇ The 2020 Florida Expert Panel to update the guidelines met in February 2020 to update the Monitoring Physical Health and Side-Effects of Psychotherapeutic Medications in Adults and Children: An Integrated Approach.

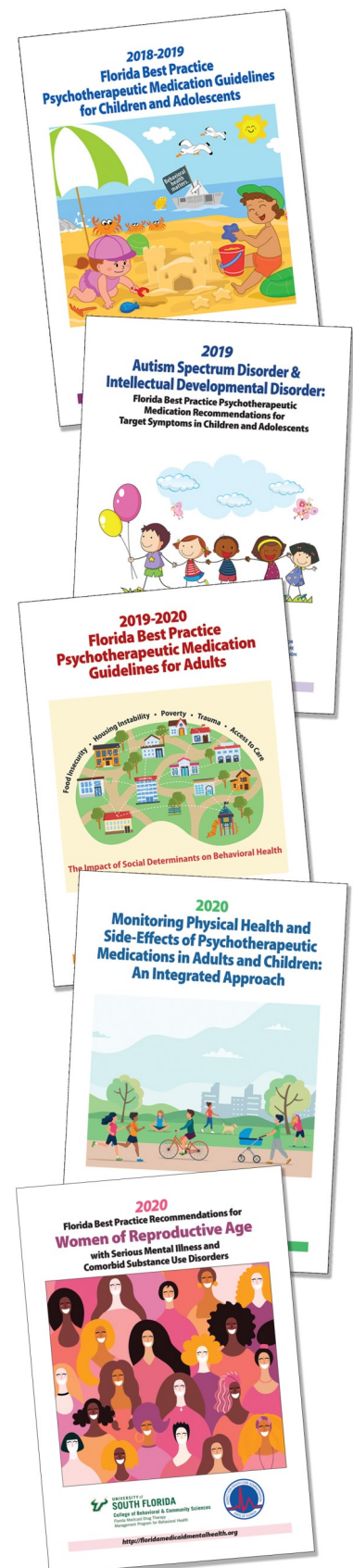
### 2020 FLORIDA BEST PRACTICE RECOMMENDATIONS FOR WOMEN OF REPRODUCTIVE AGE WITH SERIOUS MENTAL ILLNESS AND COMORBID SUBSTANCE USE DISORDERS

- ◇ The Florida Expert Panel comprised of experts on women health met virtually in April 2020 to update the Florida Best Practice Recommendations for Women of Reproductive Age with Serious Mental Illness and Comorbid Substance Use Disorders.
- ◇ The new recommendations provide treatment updates for women of reproductive age with opioid use disorders, alcohol use disorders and other substances of use, with a focus on pregnant and breastfeeding women.
- ◇ The updated recommendations also include sections on the management of postpartum psychosis and management of obesity during pregnancy.

Other available Program guidelines:

- ⇒ Florida Best Practice Psychotherapeutic Medication Guidelines for Children and Adolescents
- ⇒ Autism Spectrum Disorder and Intellectual Developmental Disorder
- ⇒ Florida Best Practice Psychotherapeutic Medication Guidelines for Adults

**Guidelines can be downloaded electronically from the Program website at: <http://floridamedicaidmentalhealth.org>.**



# USF/Aunt Bertha Comprehensive Web-Based Florida Resource Guide

<https://floridamedicaidmentalhealth.auntbertha.com/>

## About

- The USF Florida Medicaid Drug Therapy Management Program for Behavioral Health has collaborated with Aunt Bertha to create a free, web-based search tool for behavioral and physical health services and community resources.
- Resources include health, housing, food banks, transportation, and other services.

## How to Search for Local Resources

- After entering a local zip code, providers can search by category or keyword.

Search for behavioral and physical health services and community resources including housing, food banks, and transportation.

Zip

Enter zip code of interest here and click "search"

- Click the specific category of interest (e.g., food, housing, transit, health) to view available resources, or enter a keyword to narrow the search.

Zip or keyword or program

Select Language ▼

Type the keyword or name of the program here, or search by a different zip code.

FOOD HOUSING GOODS TRANSIT HEALTH MONEY CARE EDUCATION

- Click on the program of interest to view information such as services provided, location, hours, and contact information about that program.



For any questions, email [sabrinasingh@usf.edu](mailto:sabrinasingh@usf.edu).

Visit <http://floridamedicaidmentalhealth.org> for more information.

# FLORIDA MEDICAID DRUG THERAPY MANAGEMENT PROGRAM FOR BEHAVIORAL HEALTH

## SELECTED PROGRAM HIGHLIGHTS

### STATEWIDE REGIONAL BEHAVIORAL HEALTH COLLABORATIVE

- ◇ The Statewide Regional Behavioral Health Collaborative's aim is "to increase the confidence, knowledge and skill sets of pediatric primary care providers, to improve identification and treat children with behavioral health care needs by offering skill building training, technical assistance and resources".
- ◇ USF is one of several hubs throughout the state to participate in a telepsychiatry project to achieve the aim of the Statewide Regional Behavioral Health Collaborative funded by the Office of Children's Medical Services Managed Care Plan & Specialty Program. The overarching goal of the collaborative is using telehealth to increase the timely access, identification, assessment, treatment and referral of children with behavioral health conditions treated in pediatric primary care practices.
- ◇ Since starting in July 2018 the USF hub has facilitated over 200 child/youth telepsychiatry consults treated in primary care pediatric practices.
- ◇ For information about the telepsychiatry project please contact Sabrina Singh at [sabrinasingh@usf.edu](mailto:sabrinasingh@usf.edu).

### USF/AUNT BERTHA COMPREHENSIVE WEB-BASED FLORIDA COMMUNITY RESOURCE GUIDE AVAILABLE AT

[HTTPS://FLORIDAMEDICAIDMENTALHEALTH.AUNTBERTHA.COM/](https://floridamedicaidmentalhealth.auntbertha.com/)

- ◇ The USF Florida Medicaid Drug Therapy Management Program for Behavioral Health has collaborated with Aunt Bertha, a search and referral platform to create a free, web-based search tool for behavioral and physical health services and community resources available throughout Florida. The Program is also actively collaborating with community partners to increase awareness of resources that address social determinants of health such as homelessness.
- ◇ Community resources include health, housing, food banks, transportation, and other services. These resources are updated quarterly.
- ◇ USF has been working on adding additional statewide resources given the COVID-19 pandemic.
- ◇ The site first became available on April 15, 2019, there has been over 6,000 searches conducted on the site.
- ◇ Clinicians can visit <https://floridamedicaidmentalhealth.auntbertha.com> and search by zip code, category, or keyword for local Florida resources.
- ◇ For more information, visit our Program website at <http://floridamedicaidmentalhealth.org>.



# Florida Pediatric Psychiatry Hotline

## 1-866-487-9507

### No registration required.

The Florida Pediatric Psychiatry Hotline provides timely telephonic psychiatric and clinical guidance to primary care clinicians treating children with behavioral health conditions. The hotline enables primary care clinicians to get assistance for any child under their care and is highly rated by those using the service.

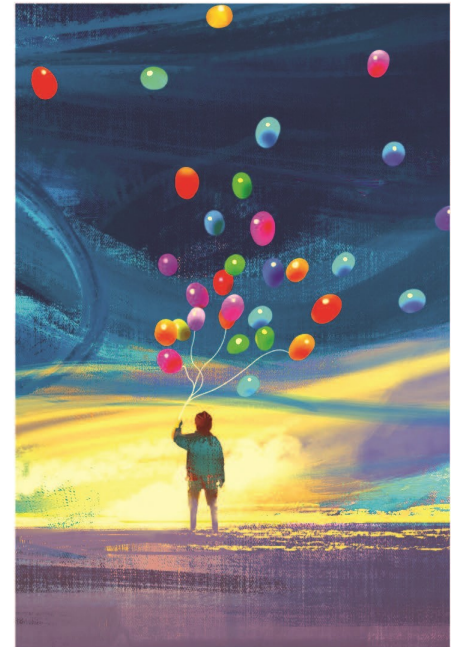
The Florida Pediatric Psychiatry Hotline is operated by the University of South Florida Division of Child and Adolescent Psychiatry and the Rothman Center for Neuropsychiatry in St. Petersburg, Florida. A team of board certified child psychiatrists from the University of South Florida oversee the hotline and provide many of the consultations.

### The goals of the Pediatric Psychiatry Hotline are to:

- Provide consultation about psychotherapeutic medications for children with behavioral health conditions.
- Facilitate a referral to a child psychiatrist or psychiatric advanced practice registered nurse (APRN) when possible.
- Promote a collaborative relationship between primary care clinicians and child psychiatrists.

### About the service:

- The hotline is free and related to consultation about medication management.
- Calls will be answered on non-holiday weekdays between 8:30 am and 4:30 pm.
- Most calls will be scheduled with a child psychiatrist within 1 to 4 hours.
- Telephone consultations are limited to 20 minutes per call.
- Only information relevant to medication management will be discussed. No patient names or other unique identifying information needs to be provided.



<http://floridamedicaidmentalhealth.org>

The Florida Pediatric Psychiatry Hotline is funded by the Florida Medicaid Drug Therapy Management Program for Behavioral Health through a contract with the Florida Agency for Healthcare Administration.

# FLORIDA MEDICAID DRUG THERAPY MANAGEMENT PROGRAM FOR BEHAVIORAL HEALTH

## SELECTED PROGRAM HIGHLIGHTS *(CONTINUED)*

### PROGRAM WEBINARS

The Florida Medicaid Drug Therapy Management Program of Behavioral Health offers free webinars to address a range of behavioral health topics and allows providers to stay updated on the current evidence-based best-practice recommendations for care integration, and treatment of a range of behavioral health symptoms and conditions.

Visit the Program's website to view recent webinars:

- ◇ **Pediatric Psychiatry via Telehealth Consultation: What I'm Doing Now as a Pediatric Psychiatrist and Future Direction** - *Leigh Ruth, MD*
- ◇ **Artificial Intelligence for Social Determinants of Health** - *Steve Miff, PhD*
- ◇ **Telepsychiatry: Trends and Challenges in Pediatric Primary Care** - *Daniel Castellanos, MD*

Webinar recordings available at <http://floridamedicaidmentalhealth.org>.

---

### RECENTLY PUBLISHED RESEARCH

Correll CU, Davis RE, Weingart M, Saillard J, O'Gorman C, Kane JM, et al. Efficacy and Safety of Lumateperone for Treatment of Schizophrenia: A Randomized Clinical Trial. *JAMA Psychiatry*. 2020;77(4):349-358. Available from doi: 10.1001/jamapsychiatry.2019.4379

Breaux R, Waschbusch DA, Marshall R, Humphrey H, Pelham WE Jr, Waxmonsky JG. The Role of Parental Knowledge and Attitudes about ADHD and Perceptions of Treatment Response in the Treatment Utilization of Families of Children with ADHD. *Evid Based Pract Child Adolesc Ment Health*. 2020;5(1):102-114. Available from doi:10.1080/23794925.2020.1727797



Guidelines can also be downloaded electronically from the Program website at <http://floridamedicaidmentalhealth.org>.

# Florida Medicaid Drug Therapy Management Program for Behavioral Health

## Working with Medicaid health plans and providers to:

- Improve behavioral health prescribing practices
- Improve patient adherence to medication
- Reduce clinical risks and medication side effects
- Improve behavioral and physical health outcomes

The following treatment guidelines are available on our website at [floridamedicaidmentalhealth.org](http://floridamedicaidmentalhealth.org).

- Best Practice Psychotherapeutic Medication Guidelines for Children and Adolescents
- Autism Spectrum Disorder & Intellectual Developmental Disorder: Best Practice Psychotherapeutic Medication Recommendations for Target Symptoms in Children and Adolescents
- Best Practice Psychotherapeutic Medication Guidelines for Adults
- Monitoring Physical Health and Side-Effects of Psychotherapeutic Medications in Adults and Children: An Integrated Approach
- Best Practice Recommendations for Women of Reproductive Age with Severe Mental Illness and Substance Use Disorders

The **Florida Pediatric Psychiatry Hotline** is a free service that provides consultation about medication management for behavioral health.

**Florida Pediatric Psychiatry Hotline**

**1-866-487-9507**



UNIVERSITY of  
**SOUTH FLORIDA**

**College of Behavioral & Community Sciences**

Florida Medicaid Drug Therapy  
Management Program for Behavioral Health

For more information, visit us at

**[floridamedicaidmentalhealth.org](http://floridamedicaidmentalhealth.org)**

If you would like hard copies of the guidelines, please email  
[sabrinasingh@usf.edu](mailto:sabrinasingh@usf.edu)

